

Original Article

# Angiotensin-(1-9) ameliorates pulmonary arterial hypertension via angiotensin type II receptor

Seung Ah Cha, Byung Mun Park, and Sunh Hee Kim\*

Department of Physiology, Research Institute for Endocrine Sciences, Chonbuk National University Medical School, Jeonju 54907, Korea

## ARTICLE INFO

Received March 14, 2018

Revised March 26, 2018

Accepted April 16, 2018

### \*Correspondence

Suhn Hee Kim

E-mail: shkim@chonbuk.ac.kr

### Key Words

Angiotensin-(1-9)

Angiotensin II type 2 receptor

Apoptosis

Pulmonary hypertension

**ABSTRACT** Angiotensin-(1-9) [Ang-(1-9)], generated from Ang I by Ang II converting enzyme 2, has been reported to have protective effects on cardiac and vascular remodeling. However, there is no report about the effect of Ang-(1-9) on pulmonary hypertension. The aim of the present study is to investigate whether Ang-(1-9) improves pulmonary vascular remodeling in monocrotaline (MCT)-induced pulmonary hypertensive rats. Sprague-Dawley rats received Ang-(1-9) (576  $\mu$ g/kg/day) or saline via osmotic mini-pumps for 3 weeks. Three days after implantation of osmotic mini-pumps, 50 mg/kg MCT or vehicle were subcutaneously injected. MCT caused increases in right ventricular weight and systolic pressure, which were reduced by co-administration of Ang-(1-9). Ang-(1-9) also attenuated endothelial damage and medial hypertrophy of pulmonary arterioles as well as pulmonary fibrosis induced by MCT. The protective effects of Ang-(1-9) against pulmonary hypertension were inhibited by Ang type 2 receptor (AT<sub>2</sub>R) blocker, but not by Mas receptor blocker. Additionally, the levels of LDH and inflammatory cytokines, such as TNF- $\alpha$ , MCP-1, IL-1 $\beta$ , and IL-6, in plasma were lower in Ang-(1-9) co-treated MCT group than in vehicle-treated MCT group. Changes in expressions of apoptosis-related proteins such as Bax, Bcl-2, Caspase-3 and -9 in the lung tissue of MCT rats were attenuated by the treatment with Ang-(1-9). These results indicate that Ang-(1-9) improves MCT-induced pulmonary hypertension by decreasing apoptosis and inflammatory reaction via AT<sub>2</sub>R.

## INTRODUCTION

Pulmonary hypertension (PH) is a progressive and fatal disease characterized by a sustained elevation of pulmonary arterial pressure and pathological changes involving endothelial injury, medial hypertrophy, adventitial thickening, inflammatory cell infiltration, and fibrosis [1]. These remodeled and obstructed vessels persistently provide some limitation of blood flow through pulmonary arteries, which cause an increased right ventricular (RV) afterload followed by RV hypertrophy and failure [1]. Pulmonary vascular remodeling has become a key target for therapy. Although current therapies improve symptoms and hemodynamics of PH, true reversal of pulmonary vascular remodeling is rarely

achieved. Therefore, further studies are needed to develop more effective therapies to target the abnormal pulmonary vasculature.

The renin-angiotensin system (RAS) plays an important role in lung pathophysiology because all major components of RAS are expressed in the lung tissue [2]. Particularly, the counter-regulatory arm of RAS, angiotensin converting enzyme (ACE)-angiotensin II (Ang II)-angiotensin type 1 receptor (AT<sub>1</sub>R) axis and ACE2-Ang-(1-7)-Mas receptor axis, has been highlighted in lung injury. Ang-(1-9) generated from Ang I by ACE2 is known as another counter-balancing axis of RAS. However, little is known about the biological effects of Ang-(1-9) in PH. Available evidence shows that Ang-(1-9) has beneficial effects in preventing/ameliorating cardiovascular remodeling [3]. It has been demonstrated



This is an Open Access article distributed under the terms of the Creative Commons Attribution Non-Commercial License, which permits unrestricted non-commercial use, distribution, and reproduction in any medium, provided the original work is properly cited.  
Copyright © Korean J Physiol Pharmacol, pISSN 1226-4512, eISSN 2093-3827

**Author contributions:** S.A.C. and S.H.K. designed experiments. S.A.C. performed most of experiments and wrote the manuscript. B.M.P. performed immunohistochemistry and Western blot. S.H.K. revised manuscript.

that Ang-(1-9) attenuates cardiac fibrosis through decreasing collagen I expression in stroke-prone spontaneously hypertensive rats [3] and reduces blood pressure with an improvement of endothelial function in renal hypertensive rats [4]. Blockade of the Rho-associated protein kinase (ROCK) signaling pathway reduces blood pressure and vascular remodeling with increasing plasma Ang-(1-9) level and aortic ACE2 activity [5]. Ang-(1-9) also augments nitric oxide (NO) and arachidonic acid releases in endothelial cells leading to enhance the effects of bradykinin and finally improve vascular functions [6]. In addition, the AT<sub>2</sub>R is known to oppose many of the detrimental actions of the AT<sub>1</sub>R. Bruce et al. reported that a recently identified non-peptide AT<sub>2</sub>R agonist, Compound 21 attenuates the progression of PH and inhibits cardiopulmonary fibrosis [7]. Until recently, the effects of AT<sub>2</sub>R activation have been difficult to ascertain due to lack of effective agonists that can selectively activate AT<sub>2</sub>R rather than AT<sub>1</sub>R. The biological effects of Ang-(1-9) are known to be mediated via AT<sub>2</sub>R [4,8,9]. Taken together, we hypothesized that Ang-(1-9) has beneficial effects in PH. The aim of the present study was to investigate the protective role of Ang-(1-9) on vascular remodeling, and its signaling pathway in monocrotaline (MCT)-induced PH rats.

## METHODS

### Animals

Male Sprague-Dawley rats weighing 200-220 g were purchased from Daehanbiolink Co. Ltd. (Eumsung, Korea) and housed in a temperature-controlled room with a 12:12-h light-dark cycle. Animals were provided free access to standard laboratory chow (5L79 Purina rat & mouse 18% chow, Charles River Laboratories Inc., Wilmington, MA) and water. All experimental protocols conformed to the National Institutes of Health Guide for the Care and Use of Laboratory Animals (NIH publication No. 85-23, revised 1996) and were approved by our institution.

### Experimental protocols

Experiment was conducted with five groups ( $n=8$  for each group).

Group 1 was control rats received saline. Group 2 was MCT-induced PH rats. Adult male Sprague-Dawley rats weighing 200-220 g received a single subcutaneous injection of 50 mg/kg MCT (Sigma-Aldrich Co., St Louis, MO) to induce PH. Group 3 was MCT-induced PH rats pretreated with Ang-(1-9) (Bachem, Switzerland). Ang-(1-9) was infused 3 days before MCT injection for 24 days at a dose of 576  $\mu\text{g}/\text{kg}/\text{day}$  via a mini-osmotic pumps (Alzet 2004, Cupertino, CA) implanted subcutaneously between the scapulars [10]. Three days after the start of Ang-(1-9) infusion, MCT was injected. Groups 4 and 5 were MCT-induced PH rats

pretreated with Ang-(1-9) in the presence of AT<sub>2</sub>R or Mas R antagonist. Either PD 123,319 (576  $\mu\text{g}/\text{kg}/\text{day}$ ; Sigma-Aldrich Co.) [3] or A779 (576  $\mu\text{g}/\text{kg}/\text{day}$ ; Bachem) [10] was infused via mini-osmotic pumps 2 days before the start of Ang-(1-9) infusion, and Ang-(1-9) was then co-administered 2 days later. Three days after the start of Ang-(1-9) infusion, MCT was injected. All rats were sacrificed 21 days after MCT injection.

### Measurements of right ventricular systolic pressure and weight

To measure the right ventricular systolic pressure (RVSP) on 21 days after MCT injection, rats were anesthetized with ketamine (Yuhan, Korea) and xylazine (Bayer Korea, Korea). Polyethylene tube connected to PowerLab (AD Instruments Pty. Ltd, Australia) via the pressure transducer (Statham Instruments, Oxnard, CA) was inserted into the RV through the right jugular vein. After stabilization, RVSP was measured for 10 min and blood was collected from the abdominal aorta [11]. Hearts and lungs were quickly removed, weighed, and stored at  $-70^{\circ}\text{C}$  until assayed.

### Measurements of hormones and cytokine concentrations in plasma

Plasma atrial natriuretic peptide (ANP) was extracted using a Sep-Pak C<sub>18</sub> cartridge and the ANP concentrations in plasma and ventricles were measured using specific radioimmunoassay (RIA), as described previously [12]. The plasma renin concentration (PRC) was also measured using RIA, as described previously [12]. Severity of lung injury was determined by the concentration of lactate dehydrogenase (LDH) using LDH ELISA kit (Takara Bio Inc., Japan) [13,14]. Concentrations of tumor necrosis factor- $\alpha$  (TNF- $\alpha$ ), monocyte chemoattractant protein-1 (MCP-1), IL-1 $\beta$  and IL-6 in plasma were measured by using rat magnetic bead panel (EMD Millipore, Temecula, CA).

### Histologic analysis

Left upper lung tissues were fixed with 4% paraformaldehyde, paraffin-embedded, and sliced with 4  $\mu\text{m}$  thickness. Lung tissue sections were stained with hematoxylin and eosin (H&E). To determine the extent of collagen deposition in pulmonary arteries, Sirius red staining and Masson trichrome staining was performed and quantified by modified ashcroft scoring system [15,16]. For immunohistochemistry, the tissue sections were blocked with peroxidase blocking agent for 5 min, washed with Tris-HCl with Tween (TBST), and blocked with protein blocking serum free buffer for 5 min. Then, sections were incubated with anti- $\alpha$ -smooth muscle actin ( $\alpha$ -SMA) (Sigma-Aldrich Co.) or anti-von Willebrand Factor (vWF) (Millipore, Temecula, CA) overnight at  $4^{\circ}\text{C}$  followed by washing with TBST for 5 min. Enough labelled polymer conjugated with secondary antibodies

(Dako, Carpinteria, CA) were applied to the slides for 30 min, followed by washing with TBST for 5 min. Peroxidase activity was detected with the ready-to-use AEC+substrate chromogen (Dako). At least twenty arteries of 15-100  $\mu\text{m}$  per each rat were evaluated in  $\alpha$ -SMA stained slides through a light microscope (imager M1, Carl Zeiss, Jena, Germany) at  $\times 400$  magnification and quantified by image J software.

The medial wall thickness is calculated as follows:

$$\text{Wall thickness} = \frac{\text{total area of artery} - \text{lumen area of artery}}{\text{total area of artery}}$$

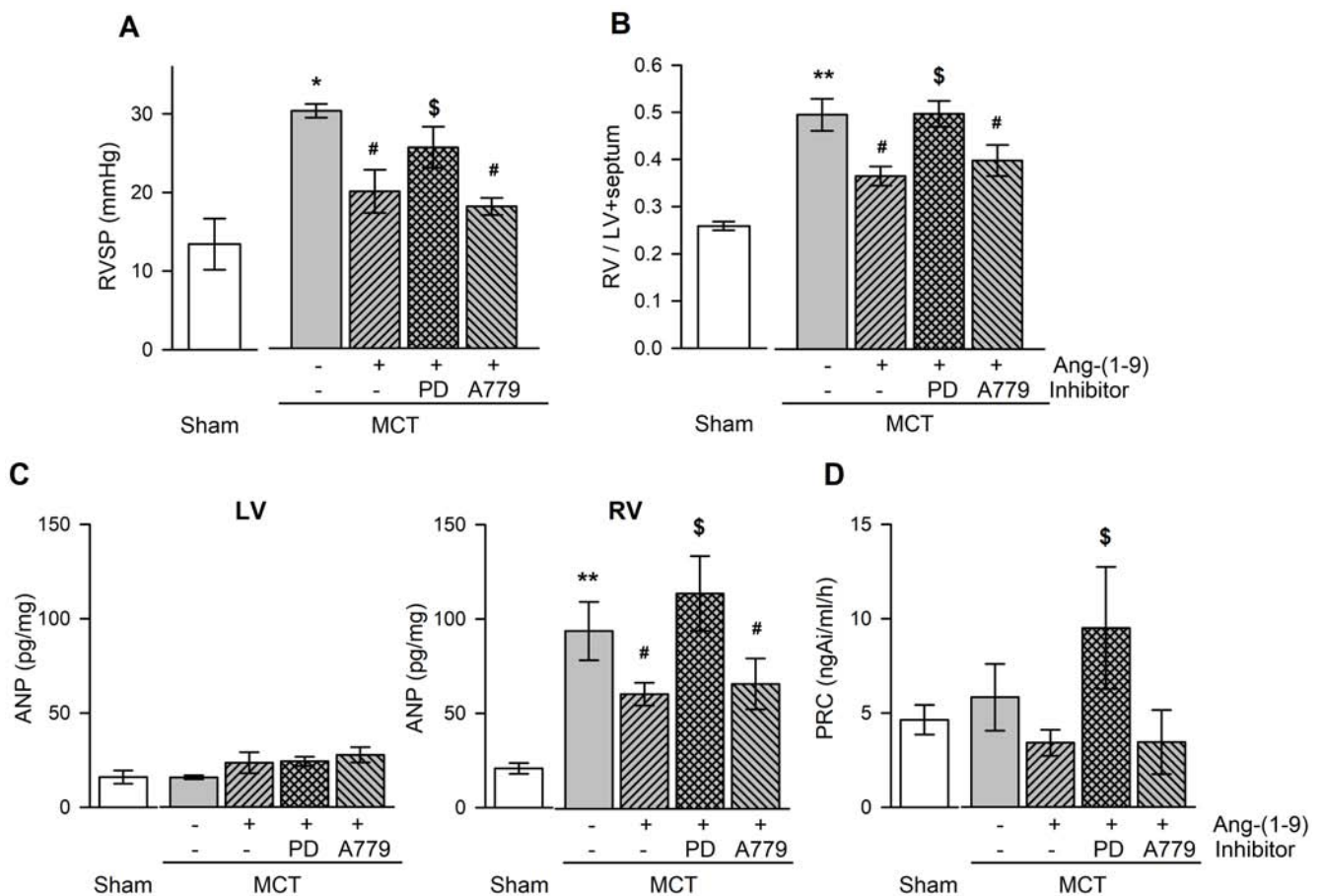
## Western blot analysis

Lung tissues were homogenized in lysis buffer containing RIPA II cell lysis buffer (GenDEPOT, Barker, TX), protease inhibitors and phosphatase inhibitors and put on the ice for 20 min. These lysed proteins were centrifuged for 15 min. Thirty microgram of protein from supernatant was separated by SDS-PAGE and transferred to PVDF membrane (Bio-Rad Laboratories, Hercules,

CA). After blocking with 5% skim milk (Bio-Rad), membrane was incubated with 2  $\mu\text{l}$  primary antibodies against Bax, Bcl-2, Caspase-3, Caspase-9 (Cell Signaling Technology, Denver, MA for all), AT<sub>1</sub>R (Sigma-Aldrich Co.), AT<sub>2</sub>R (Sigma-Aldrich Co.), Mas receptor (Alomone Labs, Israel), ACE (Santa Cruz Biochemicals, Santa Cruz, CA), and GAPDH (Bioworld technology, St. Louis Park, MN). After washed with T-TBS buffer 6 times for 5 min each, membrane was incubated with goat anti-rabbit IgG (Enzo Life Sciences) for 30 min. Membrane was then washed again with T-TBS, developed using ECL (Amersham, Arlington, IL) and visualized using LAS-1000 (Fujifilm, Japan).

## Statistical analyses

Statistical analyses were performed using GraphPad Prism<sup>®</sup> 6 (GraphPad Software, La Jolla, CA). The results are presented as the mean  $\pm$  SEM. Statistical significance of the differences was assessed using analysis of variance followed by the Bonferroni multiple comparison test. Student's *t* test was also used. The critical



**Fig. 1. Effects of Ang-(1-9) on ventricular pressure and weight, and plasma hormone levels in MCT-treated rats.** Changes in RVSP (A), RV/LV+septum (B), ANP in ventricular tissue (C), and PRC (D) with and without Ang-(1-9) in MCT-treated rats. RVSP, right ventricular systolic pressure; RV/LV+septum, the ratio of free wall of right ventricular weight to left ventricular weight+septal weight; PRC, plasma renin concentration; MCT, mono-crotaline; LV, RV, left and right ventricle, respectively; PD, PD123,319. Values are expressed as mean  $\pm$  SEM of 8 rats per groups. \*vs. sham rats,  $p < 0.05$ , \*\* $p < 0.01$ ; #vs. MCT rats,  $p < 0.05$ ; \$vs. Ang-(1-9),  $p < 0.05$ .

level of significance was set at  $p < 0.05$ .

## RESULTS

### Ang-(1-9) ameliorates MCT-induced increases in RVSP and RV weight

The RVSP in MCT-treated rats was significantly higher than that in the normal controls on 21 days after the MCT injection ( $30.20 \pm 0.90$  mmHg vs.  $13.40 \pm 3.30$  mmHg;  $p < 0.01$ ) (Fig. 1A). The pretreatment with Ang-(1-9) attenuated the MCT-induced increase in RVSP ( $19.9 \pm 2.8$  mmHg), which was inhibited by AT<sub>2</sub>R antagonist, PD123,319 but not by Mas receptor antagonist, A779 (Fig. 1). Subcutaneous injection of MCT increased the ratio of RV weight to left ventricle+septum (LV+S) weight from  $0.26 \pm 0.01$  to  $0.50 \pm 0.03$  ( $p < 0.01$ ) (Fig. 1B), which was attenuated by the pretreatment with Ang-(1-9) ( $0.37 \pm 0.02$ ). The protective effects of Ang-(1-9) were blunted by the co-treatment of PD123,319 but not by A779 (Fig. 1B). The ANP level, a marker of ventricular hypertrophy, was higher in RV of MCT rats than that in sham rats and the pretreatment with Ang-(1-9) attenuated an increased ANP level in RV (Fig. 1C). PRC did not change significantly except MCT rats co-treated with Ang-(1-9) and PD123,319 (Fig. 1D). Ang-(1-9) improved the survival rate of MCT-treated rats (83%,  $n=6$  vs.

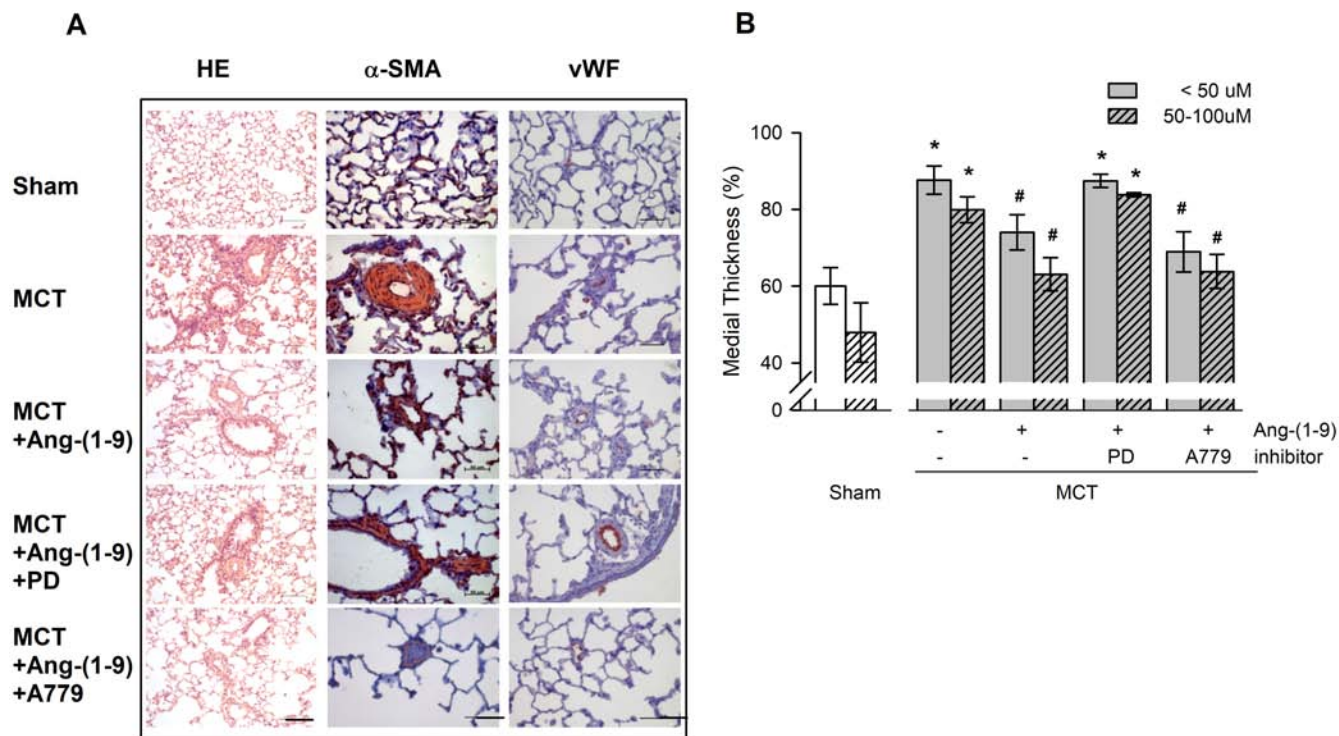
33%,  $n=6$ ) on 28 days after MCT injection.

### Ang-(1-9) attenuates the endothelial damage and the medial hypertrophy of pulmonary arteriole in MCT rats

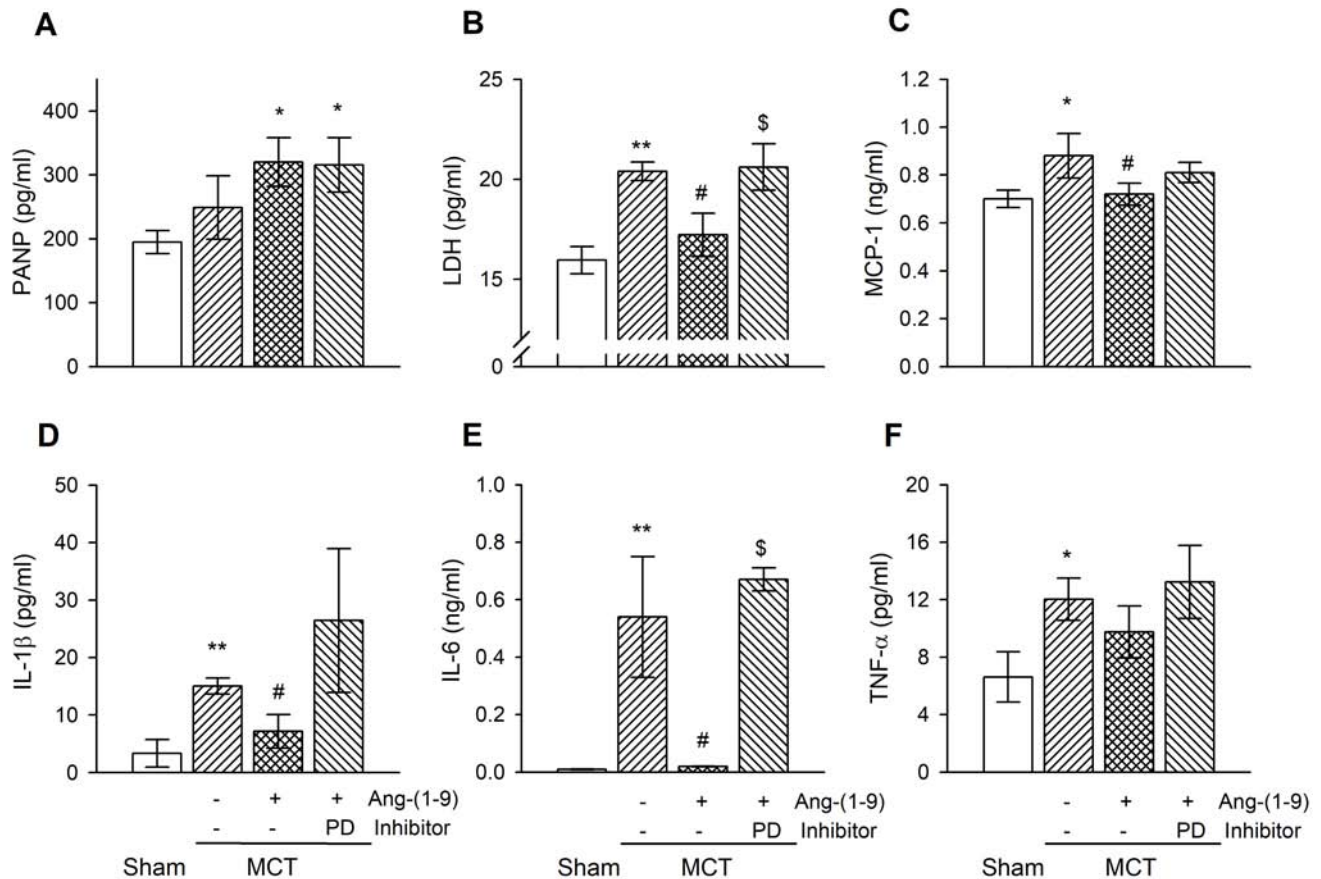
Fig. 2A shows a representative immunohistochemical finding of pulmonary arteriole with vWF and  $\alpha$ -SMA antibodies, a marker of endothelial damage and medial hypertrophy, respectively. Ang-(1-9) attenuated the expressions of vWF and  $\alpha$ -SMA, which were blunted by the co-treatment of PD 123,319, but not by the co-treatment of A779. The quantitative analysis of immunohistochemical finding shows that the medial thickness of pulmonary arterioles was increased in both arterioles sized 50-100  $\mu$ m and less than 50  $\mu$ m (external diameter) by MCT treatment and Ang-(1-9) attenuated the medial hypertrophy. The anti-hypertrophic and anti-proliferative effects of Ang-(1-9) on pulmonary arterioles were inhibited by the co-treatment of PD 123,319, but not by the co-treatment of A779 (Fig. 2B).

### Ang-(1-9) reduces inflammation-related cytokines in plasma of MCT rats

Subcutaneous single injection of MCT caused severe pulmonary inflammation. As shown in H&E staining (Fig. 2A), inflam-



**Fig. 2. Effects of Ang-(1-9) on MCT-induced pulmonary arterial intimal proliferation.** (A) Representative H&E staining (bar=100  $\mu$ m) and immunohistochemical staining for  $\alpha$ -SMA and vWF (bar=50  $\mu$ m) in lung tissues of MCT rats with or without Ang-(1-9). (B) Quantification of the medial thickness of pulmonary vessels <50  $\mu$ m and 50-100  $\mu$ m in external diameter. Values are expressed as mean  $\pm$  SEM of approximately 30 arterioles of 5 rats per groups.  $\alpha$ -SMA,  $\alpha$ -smooth muscle actin; vWF, von Willebrand Factor. \*vs. sham rats,  $p < 0.05$ ; #vs. MCT rats,  $p < 0.05$ .



**Fig. 3. Plasma cytokine levels in MCT-treated rats.** Plasma levels of ANP (A), LDH (B), MCP-1 (C), IL-1 $\beta$  (D), IL-6 (E) and TNF- $\alpha$  (F) with or without Ang-(1-9). Values are expressed as mean $\pm$ SEM of 8 rats per groups. \*vs. sham rats,  $p < 0.05$ ; \*\* $p < 0.01$ ; #vs. MCT rats,  $p < 0.05$ ; \$vs. Ang-(1-9),  $p < 0.05$ .

matory cells were dramatically infiltrated in lung of MCT-treated rats compared with that of sham rats. Therefore, we measured ANP and LDH as an indicator of lung injury and disease activity [13,14] and pro-inflammatory cytokines [17] in plasma (Fig. 3). The plasma concentration of ANP tended to increase without significance in MCT rats and was higher in Ang-(1-9)-pretreated group (Fig. 3A). The levels of LDH, MCP-1, IL-1 $\beta$ , IL-6, and TNF- $\alpha$  were significantly increased in plasma of MCT rats compared with those of sham rats. These increases were attenuated by Ang-(1-9) administration. The anti-inflammatory effect of Ang-(1-9) tended to be blocked by the co-treatment of PD123,319.

### Ang-(1-9) attenuates lung fibrosis in MCT rats

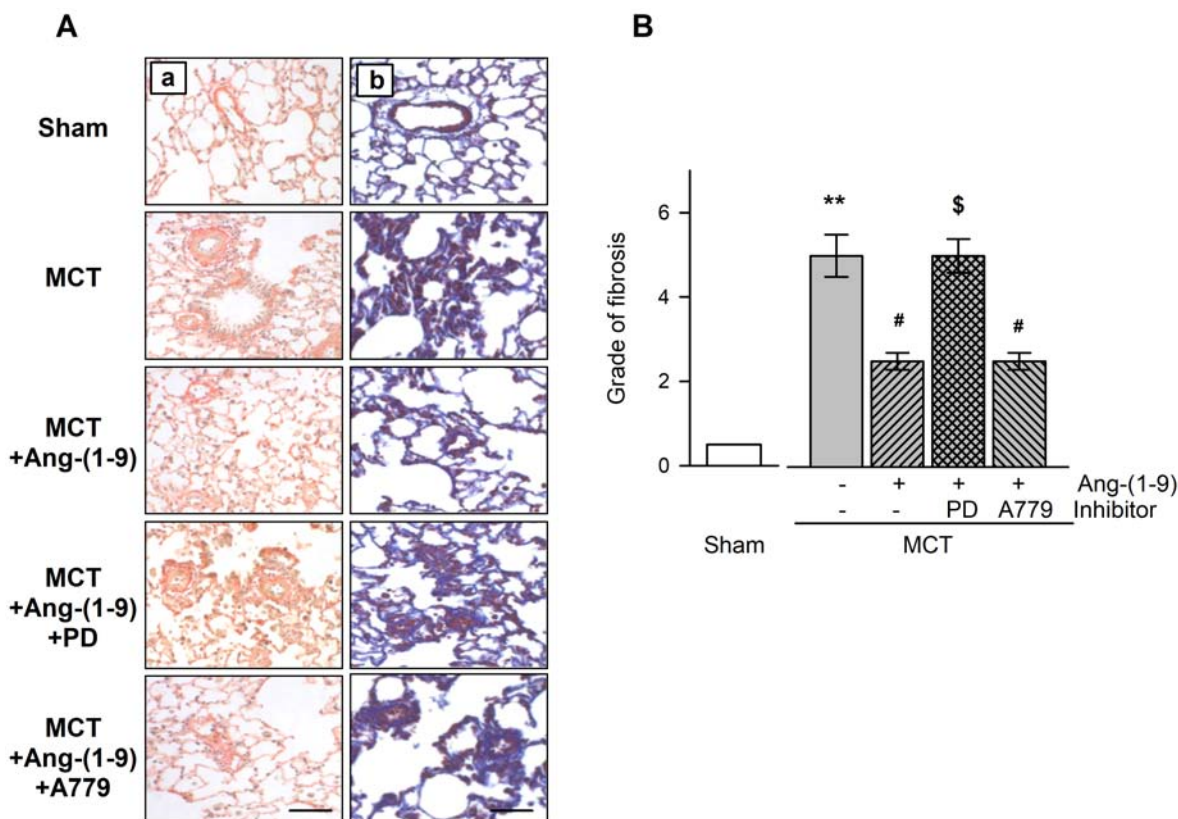
To determine the extent of collagen deposition in pulmonary arteries, Sirius red staining and Masson trichrome staining were performed and quantified by modified ashcroft scoring system [15]. Most of the lung structures were damaged and more collagen was deposited compared with those of sham (Fig. 4A). Not only in perivascular region but in pulmonary interstitium, alveolar septal walls were severely thickened and confluent fibrotic masses were seen in MCT-treated rats. Ang-(1-9) administration decreased adventitial fibrosis and collagen deposition without

fibrotic masses. Lung sections of PD123,319 with Ang-(1-9) administration group were shown similar characteristics as those of MCT rats, demonstrating the protective effect of Ang-(1-9) is via AT<sub>2</sub>R. By quantitative analysis of immunohistochemistry, MCT rats showed high grade of lung fibrosis which was inhibited by Ang-(1-9) treatment (Fig. 4B). The anti-fibrotic effect of Ang-(1-9) was abolished by the co-treatment with PD123,319 but not by the co-treatment with A779.

### Ang-(1-9) changes the expression of apoptotic-related proteins and Ang-related receptors in lung tissues of MCT rats

To evaluate whether the protective effect of Ang-(1-9) in MCT rats is mediated via apoptosis, the expressions of apoptotic-related proteins in lung tissues were measured. Western blot showed that the expressions of Bax, caspase-3, and -9 proteins were increased and the expression of Bcl protein was decreased in lung tissues of MCT rats (Fig. 5A). The changes in apoptotic-related protein expressions in MCT-treated rats were attenuated by the pretreatment of Ang-(1-9) (Fig. 5B). The anti-apoptotic effect of Ang-(1-9) tended to be attenuated by the co-treatment with PD123,319.

MCT injection increased AT<sub>1</sub>R and Mas R expressions and



**Fig. 4. Effects of Ang-(1-9) on MCT-induced pulmonary fibrosis.** Immunohistological analysis of pulmonary fibrosis using Sirius-red (Aa), Trichrome masson (Ab) staining (bar=100  $\mu$ M) and quantification by modified ashcroft scoring system (B) with or without Ang-(1-9). Values are expressed as mean $\pm$ SEM of 8 rats per groups. \*\*vs. sham rats,  $p < 0.01$ ; #vs. MCT rats,  $p < 0.05$ ; \$vs. Ang-(1-9),  $p < 0.05$ .

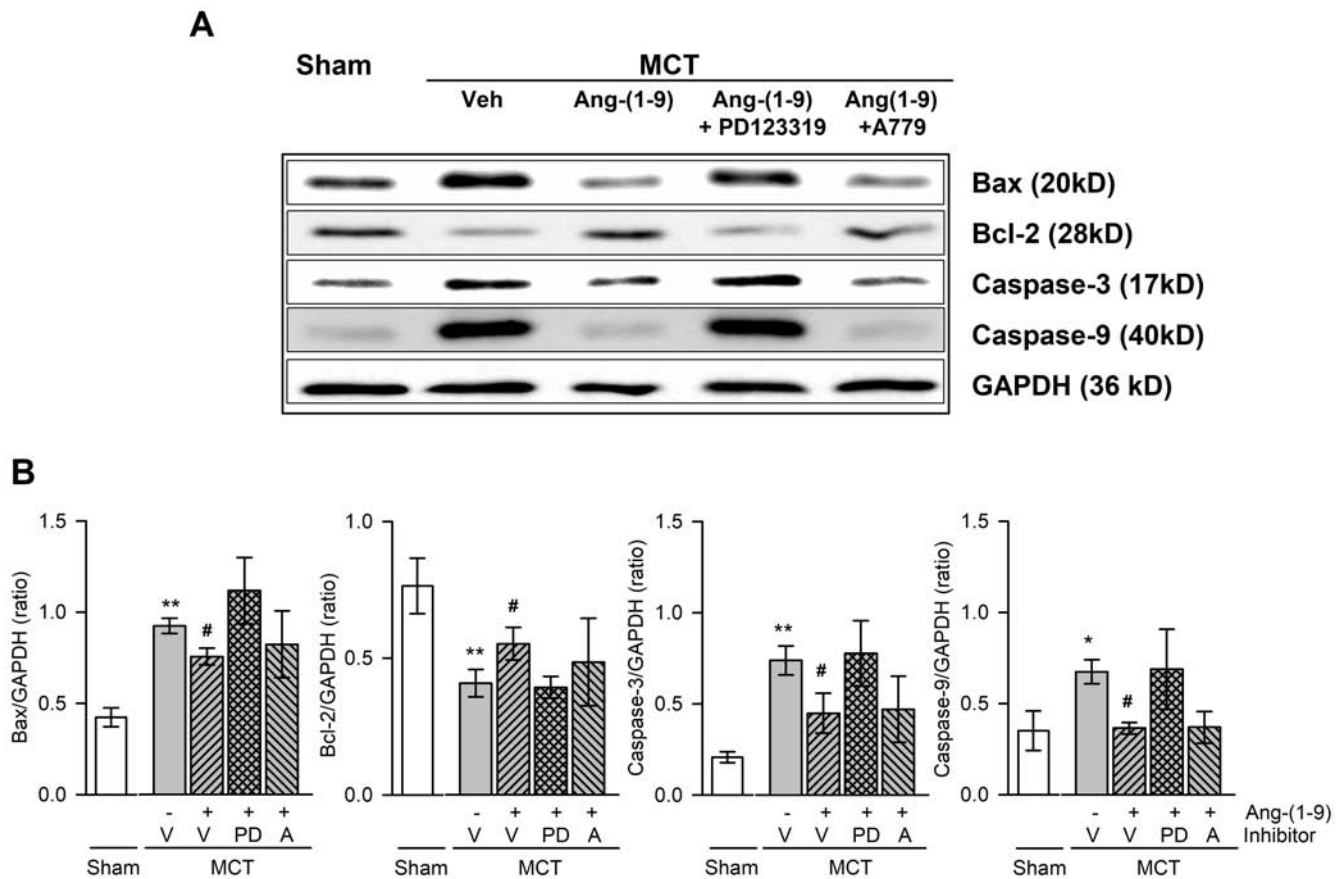
decreased  $AT_2R$  expression in lung tissue, which was reversed by the pretreatment with Ang-(1-9) infusion (Fig. 6). These effect of Ang-(1-9) tended to be attenuated by the co-treatment with PD123,319. However, a decreased expression of ACE in MCT rats tended to increase without significance by the pretreatment with Ang-(1-9).

## DISCUSSION

We found that Ang-(1-9) attenuated the progression of PH. The administration of Ang-(1-9) ameliorated not only RV hypertrophy but pulmonary vascular remodeling induced by MCT treatment. Increases in inflammatory cytokines in plasma and in apoptotic-related protein expressions in the lung were also attenuated by Ang-(1-9). These beneficial effects of Ang-(1-9) were blunted by co-treatment with  $AT_2R$  antagonist. Therefore, we suggest that the protective effects of Ang-(1-9) against PH are mediated via  $AT_2R$  through an inhibition of apoptosis and inflammation.

Ang-(1-9) can be detected in plasma and its circulating level increased early after myocardial infarction or in animals treated with ACE inhibitor [18]. Available evidence shows that Ang-(1-9) has beneficial effects in preventing/ameliorating cardiovascular

remodeling [4,19]. However, the effects of Ang-(1-9) on PH are not clear. Experimental PH models induced by chronic hypoxic exposure and MCT treatment have been used to investigate the pathogenesis and treatment of human PH. MCT-induced PH model has some advantage for the understanding of vascular remodeling [20] compared with chronic hypoxia-induced PH model [21]. The most common features of PH are vascular remodeling characterized by endothelial injury and medial wall thickening, and perivascular inflammation and fibrosis. Especially, wall thickening of pulmonary arterioles leads to increase a pulmonary vessel resistance and RV afterload followed by RV hypertrophy. In the present study, MCT administration resulted in a significant increase in RVSP, which was associated with the development of RV hypertrophy. The immunohistochemical finding of pulmonary arteriole stained with vWF and  $\alpha$ -SMA antibodies showed severe endothelial damage and medial hypertrophy of pulmonary in MCT-treated rats. The pretreatment with Ang-(1-9) reduced the expression of vWF and  $\alpha$ -SMA. In lining with this result, both RVSP and RV hypertrophy were attenuated by Ang-(1-9). The pretreatment with Ang-(1-9) attenuated an increased ANP level, a marker of ventricular hypertrophy, in RV. Ang-(1-9) is reported to mediate its biological effects via  $AT_2R$  [8,22]. The beneficial effects of Ang-(1-9) were blunted by the co-treatment with  $AT_2R$  antagonist but not by Mas R antagonist. These results

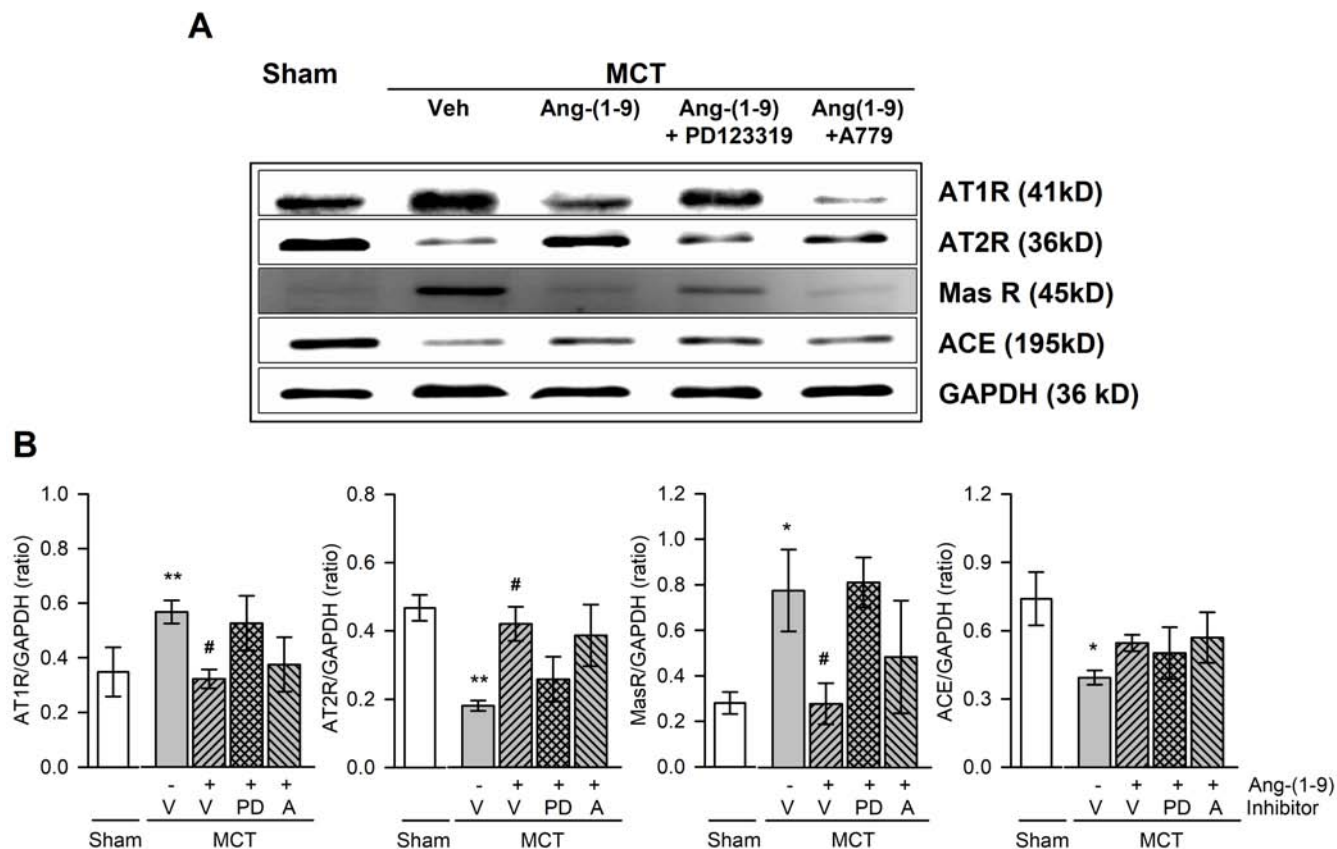


**Fig. 5. Effects of Ang-(1-9) on apoptotic-related protein expressions in lung tissues of MCT rats.** Representative western blotting of Bax, Bcl-2, Caspase-3, and Caspase-9 protein expressions in lung tissues of MCT rats with or without Ang-(1-9) (A) and quantification of protein expressions compared to GAPDH (B). Values are expressed as mean $\pm$ SEM of 8 rats per groups. V, vehicle; PD, PD123,319; A, A779. \*vs. sham rats,  $p < 0.05$ , \*\* $p < 0.01$ ; # vs. MCT rats,  $p < 0.05$ .

suggest that Ang-(1-9) ameliorates PH via  $AT_2R$ . Our data are partly consistent with other reports showing beneficial effects in ameliorating cardiovascular remodeling [4,5,19].

Ocaranza et al. have reported that Ang-(1-9) reduces hypertension, ameliorates structural alterations, and improves cardiac and endothelial function in hypertensive rats [4]. Inhibition of Rho kinase pathway increases aortic ACE2 activity and Ang-(1-9) plasma levels in DOCA hypertensive rats leading to reducing blood pressure and vascular remodeling [5]. The same group also reported that Ang-(1-9) attenuates cardiac hypertrophy via  $AT_2R$  in myocardial infarcted rats [19]. Flores-Munoz et al. suggest that Ang-(1-9) antagonizes pro-hypertrophic signalling in cardiomyocytes [9] and attenuates cardiac fibrosis in the stroke-prone spontaneously hypertensive rats [3] via the  $AT_2R$ , proposing Ang-(1-9) is an independent counter-balanced arm of the RAS. Most of studies with Ang-(1-9) described the above have been done using spontaneously, renal, DOCA- or Ang II-induced hypertensive rats to define the cardio-protective effects. The protective effects of Ang-(1-9) against PH are comparable with report showing attenuation of PH and inhibition of cardiopulmonary fibrosis by  $AT_2R$  agonist [7].

Recent studies suggest that inflammation contributes to the development of PH and the degree of perivascular inflammation is related to both vascular remodeling and increasing mean pulmonary arterial pressure [23]. Inflammation consists of both the presence and the activity of professional inflammatory cells via growth factors and cytokines. T cells and macrophages are mainly found in plexiform lesions of lung tissue in PH patients [24] and mRNA levels of pro-inflammatory cytokines are elevated in the lung of MCT-treated rats [25]. The results showing an increased serum levels of TNF- $\alpha$  and IL-6 in both MCT-treated rats and PH patients suggest that elevated levels of inflammatory cytokines may predict a survival rate in PH [26]. In addition, IL-6 accelerates the progress of PH [27], and the TNF $\alpha$  antagonist prevents and reverses MCT-induced PH [28]. Our studies showed an infiltration of inflammatory cells, especially macrophages and monocytes, in the lung and high levels of pro-inflammatory cytokines, such as MCP-1, TNF- $\alpha$ , IL-1 $\beta$ , and IL-6 in plasma of MCT rats. The pretreatment with Ang-(1-9) inhibited the infiltration of inflammatory cells and decreased plasma levels of cytokines and LDH. These observed results suggest that the protective effect of Ang-(1-9) is partly related to inhibition of inflammation. Ang II is



**Fig. 6. Effects of Ang-(1-9) on angiotensin-related protein expressions in lung tissues of MCT rats.** Representative western blotting of angiotensin type 1 receptor (AT<sub>1</sub>R), AT<sub>2</sub>R, Mas receptor (Mas R), and angiotensin converting enzyme (ACE) protein expressions in lung tissues of MCT rats with or without Ang-(1-9) (A) and quantification of protein expressions compared to GAPDH (B). Values are expressed as mean±SEM of 8 rats per groups. V, vehicle; PD, PD123,319; A, A779. \*vs. sham rats,  $p < 0.05$ , \*\* $p < 0.01$ ; #vs. MCT rats,  $p < 0.05$ .

known to be involved in perivascular inflammation through the generation of ROS and the release of pro-inflammatory cytokines [29] whereas overexpression of Ang-(1-7) prevents an increase of pro-inflammatory cytokines [25]. The beneficial effects seen with ACE2/Ang-(1-7)/Mas receptor activation are similar to those seen by AT<sub>2</sub>R activation with Compound 21 in MCT rats [7]. However, in the present study, we did not know the localization of AT<sub>1</sub>R and AT<sub>2</sub>R. It has been reported that AT<sub>1</sub>R and AT<sub>2</sub>R is localized in the endothelium and smooth muscle cells of pulmonary artery. Our data are consistent with the report showing that in PH, the expression of AT<sub>1</sub>R but not AT<sub>2</sub>R is upregulated [30,31]. Taken together the above results, the ACE2/Ang-(1-9)/AT<sub>2</sub>R axis similarly to ACE2/Ang-(1-7)/Mas receptor is another counter-regulatory arm of RAS to ACE/Ang II/AT<sub>1</sub>R.

Apoptosis from lung parenchymal damage and pulmonary endothelial cells [32] has been well recognized in the MCT-induced PH in recent studies [33]. In this study, apoptosis-related protein levels were measured by western blot. Consistent with the findings of previous reports [33,34], we demonstrate that the expressions of apoptotic biomarkers were substantially increased in lungs of MCT-treated animals and Ang-(1-9) attenuated the highly expression of apoptotic proteins. Therefore, we suggest

that the anti-apoptotic effects of Ang-(1-9) might partly relate to an inhibition of the development of PH.

In conclusion, Ang-(1-9) reduced RVSP and RV hypertrophy in MCT-induced PH. Ang-(1-9) inhibited the infiltration of inflammatory cells and reduced the pro-inflammatory cytokines. These beneficial effects of Ang-(1-9) were mediated by AT<sub>2</sub>R. Taken together, Ang-(1-9) may act as a counter-balancer of Ang II, so can be a therapeutic candidate of PH.

## ACKNOWLEDGEMENTS

This work was supported by the National Research Foundation of Korea (NRF) grant funded by the Korea government (MSIP) (No 2008-0062279 and No 2017-R1A2B-4002214).

## CONFLICTS OF INTEREST

The authors declare no conflicts of interest.



## REFERENCES

- Rabinovitch M. Molecular pathogenesis of pulmonary arterial hypertension. *J Clin Invest*. 2008;118:2372-2379.
- Marshall RP. The pulmonary renin-angiotensin system. *Curr Pharm Des*. 2003;9:715-722.
- Flores-Munoz M, Work LM, Douglas K, Denby L, Dominiczak AF, Graham D, Nicklin SA. Angiotensin-(1-9) attenuates cardiac fibrosis in the stroke-prone spontaneously hypertensive rat via the angiotensin type 2 receptor. *Hypertension*. 2012;59:300-307.
- Ocaranza MP, Moya J, Barrientos V, Alzamora R, Hevia D, Morales C, Pinto M, Escudero N, García L, Novoa U, Ayala P, Díaz-Araya G, Godoy I, Chiong M, Lavandero S, Jalil JE, Michea L. Angiotensin-(1-9) reverses experimental hypertension and cardiovascular damage by inhibition of the angiotensin converting enzyme/Ang II axis. *J Hypertens*. 2014;32:771-783.
- Ocaranza MP, Rivera P, Novoa U, Pinto M, González L, Chiong M, Lavandero S, Jalil JE. Rho kinase inhibition activates the homologous angiotensin-converting enzyme-angiotensin-(1-9) axis in experimental hypertension. *J Hypertens*. 2011;29:706-715.
- Jackman HL, Massad MG, Sekosan M, Tan F, Brovkovich V, Marcic BM, Erdös EG. Angiotensin 1-9 and 1-7 release in human heart: role of cathepsin A. *Hypertension*. 2002;39:976-981.
- Bruce E, Shenoy V, Rathinasabapathy A, Espejo A, Horowitz A, Oswald A, Francis J, Nair A, Unger T, Raizada MK, Steckelings UM, Sumners C, Katovich MJ. Selective activation of angiotensin AT2 receptors attenuates progression of pulmonary hypertension and inhibits cardiopulmonary fibrosis. *Br J Pharmacol*. 2015;172:2219-2231.
- Cha SA, Park BM, Gao S, Kim SH. Stimulation of ANP by angiotensin-(1-9) via the angiotensin type 2 receptor. *Life Sci*. 2013;93:934-940.
- Flores-Muñoz M, Smith NJ, Haggerty C, Milligan G, Nicklin SA. Angiotensin1-9 antagonises pro-hypertrophic signalling in cardiomyocytes via the angiotensin type 2 receptor. *J Physiol*. 2011;589:939-951.
- Oh YB, Kim JH, Park BM, Park BH, Kim SH. Captopril intake decreases body weight gain via angiotensin-(1-7). *Peptides*. 2012;37:79-85.
- Gao S, Oh YB, Shah A, Park WH, Chung MJ, Lee YH, Kim SH. Urotensin II receptor antagonist attenuates monocrotaline-induced cardiac hypertrophy in rats. *Am J Physiol Heart Circ Physiol*. 2010;299:H1782-1789.
- Cho KW, Kim SH, Koh GY, Seul KH, Huh KS, Chu D, Rapp NS, Moon HB, Kim KK, Kook YJ. Plasma concentration of atrial natriuretic peptide in different phases of Korean hemorrhagic fever. *Nephron*. 1989;51:215-219.
- Nishii Y, Gabazza EC, Fujimoto H, Nakahara H, Takagi T, Bruno N, D'Alessandro-Gabazza CN, Maruyama J, Maruyama K, Hayashi T, Adachi Y, Suzuki K, Taguchi O. Protective role of protein C inhibitor in monocrotaline-induced pulmonary hypertension. *J Thromb Haemost*. 2006;4:2331-2339.
- Schultze AE, Gunaga KP, Wagner JG, Hoorn CM, Moorehead WR, Roth RA. Lactate dehydrogenase activity and isozyme patterns in tissues and bronchoalveolar lavage fluid from rats treated with monocrotaline pyrrole. *Toxicol Appl Pharmacol*. 1994;126:301-310.
- Ashcroft T, Simpson JM, Timbrell V. Simple method of estimating severity of pulmonary fibrosis on a numerical scale. *J Clin Pathol*. 1988;41:467-470.
- Hübner RH, Gitter W, El Mokhtari NE, Mathiak M, Both M, Bolte H, Freitag-Wolf S, Bewig B. Standardized quantification of pulmonary fibrosis in histological samples. *Biotechniques*. 2008;44:507-1, 514-7.
- Ikeda Y, Yonemitsu Y, Kataoka C, Kitamoto S, Yamaoka T, Nishida K, Takeshita A, Egashira K, Sueishi K. Anti-monocyte chemoattractant protein-1 gene therapy attenuates pulmonary hypertension in rats. *Am J Physiol Heart Circ Physiol*. 2002;283:H2021-2028.
- Ocaranza MP, Godoy I, Jalil JE, Varas M, Collantes P, Pinto M, Roman M, Ramirez C, Copaja M, Diaz-Araya G, Castro P, Lavandero S. Enalapril attenuates downregulation of Angiotensin-converting enzyme 2 in the late phase of ventricular dysfunction in myocardial infarcted rat. *Hypertension*. 2006;48:572-578.
- Ocaranza MP, Lavandero S, Jalil JE, Moya J, Pinto M, Novoa U, Apablaza F, Gonzalez L, Hernandez C, Varas M, Lopez R, Godoy I, Verdejo H, Chiong M. Angiotensin-(1-9) regulates cardiac hypertrophy in vivo and in vitro. *J Hypertens*. 2010;28:1054-1064.
- Gomez-Arroyo JG, Farkas L, Alhussaini AA, Farkas D, Kraskauskas D, Voelkel NF, Bogaard HJ. The monocrotaline model of pulmonary hypertension in perspective. *Am J Physiol Lung Cell Mol Physiol*. 2012;302:L363-369.
- Stenmark KR, Fagan KA, Frid MG. Hypoxia-induced pulmonary vascular remodeling: cellular and molecular mechanisms. *Circ Res*. 2006;99:675-691.
- Ocaranza MP, Michea L, Chiong M, Lagos CF, Lavandero S, Jalil JE. Recent insights and therapeutic perspectives of angiotensin-(1-9) in the cardiovascular system. *Clin Sci (Lond)*. 2014;127:549-557.
- Stacher E, Graham BB, Hunt JM, Gandjeva A, Groshong SD, McLaughlin VV, Jessup M, Grizzle WE, Aldred MA, Cool CD, Tudor RM. Modern age pathology of pulmonary arterial hypertension. *Am J Respir Crit Care Med*. 2012;186:261-272.
- Cool CD, Kennedy D, Voelkel NF, Tudor RM. Pathogenesis and evolution of plexiform lesions in pulmonary hypertension associated with scleroderma and human immunodeficiency virus infection. *Hum Pathol*. 1997;28:434-442.
- Shenoy V, Ferreira AJ, Qi Y, Fraga-Silva RA, Díez-Freire C, Dooies A, Jun JY, Sriramula S, Mariappan N, Pourang D, Venugopal CS, Francis J, Reudelhuber T, Santos RA, Patel JM, Raizada MK, Katovich MJ. The angiotensin-converting enzyme 2/angiogenesis-(1-7)/Mas axis confers cardiopulmonary protection against lung fibrosis and pulmonary hypertension. *Am J Respir Crit Care Med*. 2010;182:1065-1072.
- Soon E, Holmes AM, Treacy CM, Doughty NJ, Southgate L, Machado RD, Trembath RC, Jennings S, Barker L, Nicklin P, Walker C, Budd DC, Pepke-Zaba J, Morrell NW. Elevated levels of inflammatory cytokines predict survival in idiopathic and familial pulmonary arterial hypertension. *Circulation*. 2010;122:920-927.
- Tuder RM, Voelkel NF. Pulmonary hypertension and inflammation. *J Lab Clin Med*. 1998;132:16-24.
- Sutendra G, Dromparis P, Bonnet S, Haromy A, McMurtry MS, Bleackley RC, Michelakis ED. Pyruvate dehydrogenase inhibition by the inflammatory cytokine TNF $\alpha$  contributes to the pathogenesis of pulmonary arterial hypertension. *J Mol Med (Berl)*. 2011;89:771-783.
- Marchesi C, Paradis P, Schiffrin EL. Role of the renin-angiotensin system in vascular inflammation. *Trends Pharmacol Sci*.

- 2008;29:367-374.
30. Morrell NW, Upton PD, Kotecha S, Huntley A, Yacoub MH, Polak JM, Wharton J. Angiotensin II activates MAPK and stimulates growth of human pulmonary artery smooth muscle via AT1 receptors. *Am J Physiol*. 1999;277:L440-448.
  31. de Man FS, Tu L, Handoko ML, Rain S, Ruiters G, François C, Schaliq I, Dorfmueller P, Simonneau G, Fadel E, Perros F, Boonstra A, Postmus PE, van der Velden J, Vonk-Noordegraaf A, Humbert M, Eddahibi S, Guignabert C. Dysregulated renin-angiotensin-aldosterone system contributes to pulmonary arterial hypertension. *Am J Respir Crit Care Med*. 2012;186:780-789.
  32. Wang Y, Zhang XH, Wang HL. Involvement of BMPR2 in the protective effect of fluoxetine against monocrotaline-induced endothelial apoptosis in rats. *Can J Physiol Pharmacol*. 2011;89:345-354.
  33. Yen CH, Leu S, Lin YC, Kao YH, Chang LT, Chua S, Fu M, Wu CJ, Sun CK, Yip HK. Sildenafil limits monocrotaline-induced pulmonary hypertension in rats through suppression of pulmonary vascular remodeling. *J Cardiovasc Pharmacol*. 2010;55:574-584.
  34. Chen YC, Yuan TY, Zhang HF, Wang DS, Yan Y, Niu ZR, Lin YH, Fang LH, Du GH. Salviaolic acid A attenuates vascular remodeling in a pulmonary arterial hypertension rat model. *Acta Pharmacol Sin*. 2016;37:772-782.